



# FENDGUARD

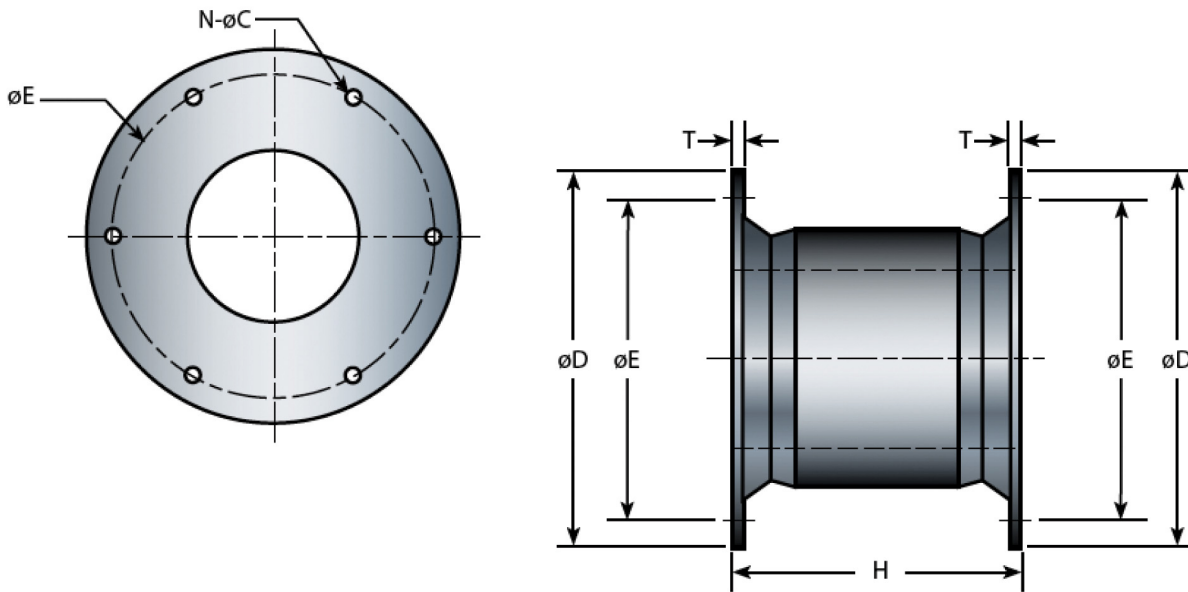
[www.fendguard.com](http://www.fendguard.com)

## Cell Fenders

# CL-FG-1150

Cell fenders are the most durable rubber fenders available and are currently the largest moulded fenders made. Among all types of fenders, cell fenders offer minimum reaction per ton-meter energy absorbed. The very geometrical shape gives it sturdiness, shear resistance, compact structure and the capacity to absorb energy equally from all directions. Fendguard's cell type fenders are available in the widest range of sizes with characteristics including:

- Good energy absorption to reaction force ratio (E/R)
- Integrated and fully-embedded fender flanges make assembly and installation simple
- Good shear force resistance due to the large diameter of the fender flanges
- Large fender footprint with good force distribution could lead to relative light panel construction



Model	H	$\varnothing D$	$\varnothing E$ PCD	T	N - $\varnothing C$	Bolt Size
Metric (mm)	1150	1500	1300	40	6-50	M42
Imperial (in)	45.3	59.1	51.2	1.57	6-1.97	1-3/4

## STANDARD RUBBER GRADE PERFORMANCE

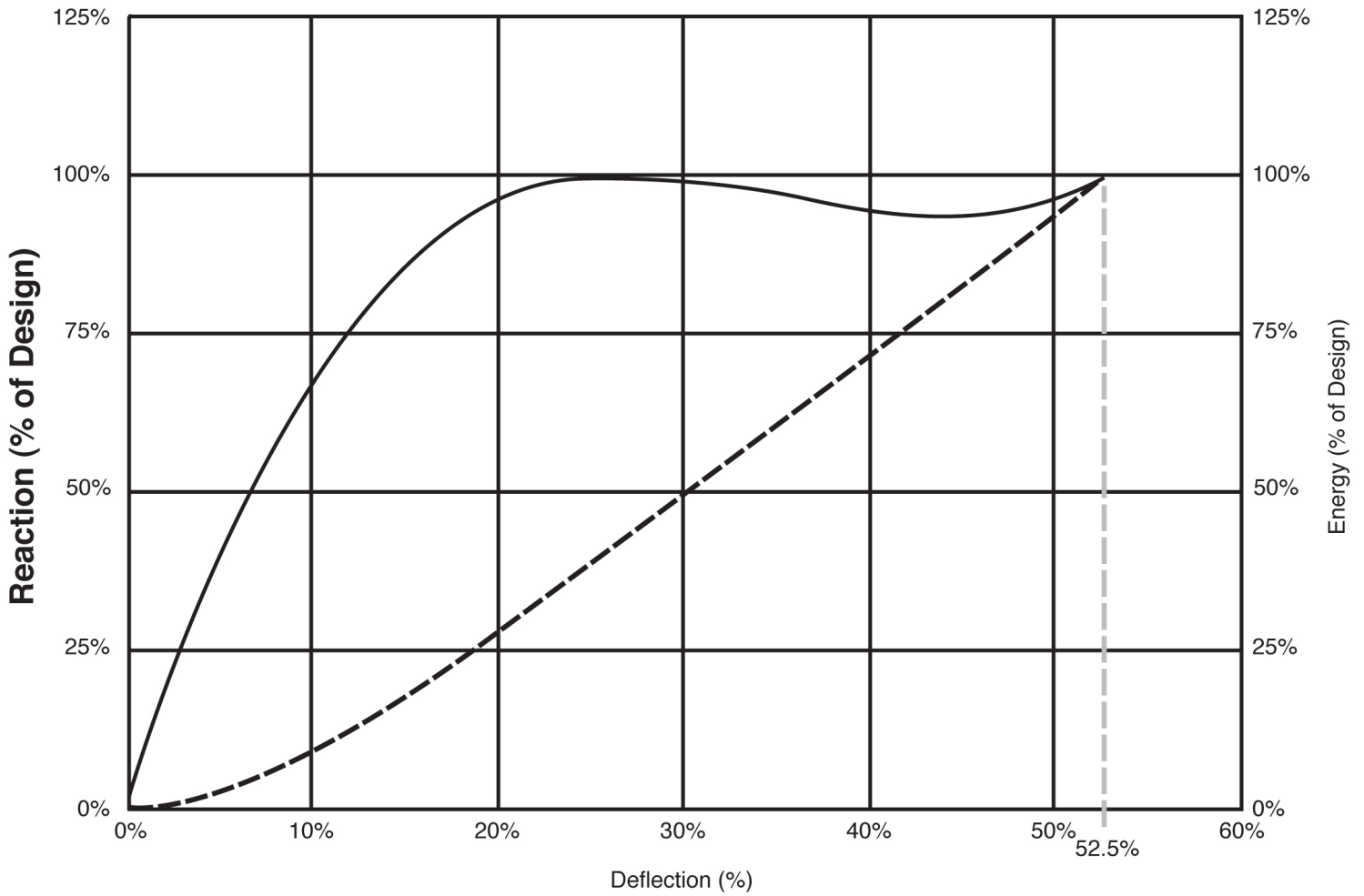
CL-FG-1150	G4		G3		G2		G1		G0	
	R	E	R	E	R	E	R	E	R	E
Metric (kN : kN-m)	975	492	865	437	750	379	578	291	462	233
Imperial (k : ft-kips)	219	363	194	322	169	279	130	214	104	172

## INTERMEDIATE RUBBER GRADES | Metric Units are in kN and kn-m Imperial units are in kips and ft-kips

Grade	Reaction/Energy	Metric	Imperial	Grade	Reaction/Energy	Metric	Imperial
G0.1	R	474	106	G2.1	R	796	179
	E	239	176		E	402	296
G0.2	R	485	109	G2.2	R	808	182
	E	245	180		E	408	301
G0.3	R	497	112	G2.3	R	184	184
	E	250	185		E	414	305
G0.4	R	508	114	G2.4	R	796	179
	E	256	189		E	402	296
G0.5	R	520	117	G2.5	R	808	182
	E	262	193		E	408	301
G0.6	R	532	120	G2.6	R	184	184
	E	268	197		E	414	305
G0.7	R	543	122	G2.7	R	831	187
	E	274	202		E	420	309
G0.8	R	555	125	G2.8	R	842	189
	E	279	206		E	425	314
G0.9	R	566	127	G2.9	R	854	192
	E	285	210		E	431	318
G1.0	R	578	130	G3	R	865	194
	E	291	214		E	437	322
G1.1	R	595	134	G3.1	R	876	197
	E	300	221		E	443	326
G1.2	R	612	138	G3.2	R	887	199
	E	309	227		E	448	330
G1.3	R	630	142	G3.3	R	898	202
	E	317	234		E	454	334
G1.4	R	647	145	G3.4	R	909	204
	E	326	240		E	459	338
G1.5	R	664	149	G3.5	R	920	207
	E	335	247		E	465	342
G1.6	R	681	153	G3.6	R	931	209
	E	344	253		E	470	346
G1.7	R	698	157	G3.7	R	942	212
	E	353	260		E	476	350
G1.8	R	716	161	G3.8	R	953	214
	E	361	266		E	481	354
G1.9	R	733	165	G3.9	R	964	217
	E	370	273		E	487	359
G2	R	750	169	G4	R	975	219
	E	379	279		E	492	363

### GENERALIZED PERFORMANCE CURVE-CELL FENDER

— Reaction - - - Energy



[www.fendguard.com](http://www.fendguard.com)

Toll Free: 1-888-219-0418  
Tel: (604) 273-4557

Fax: 1-888-845-9522 / (604) 273-1006  
E-mail: [sales@fendguard.com](mailto:sales@fendguard.com)