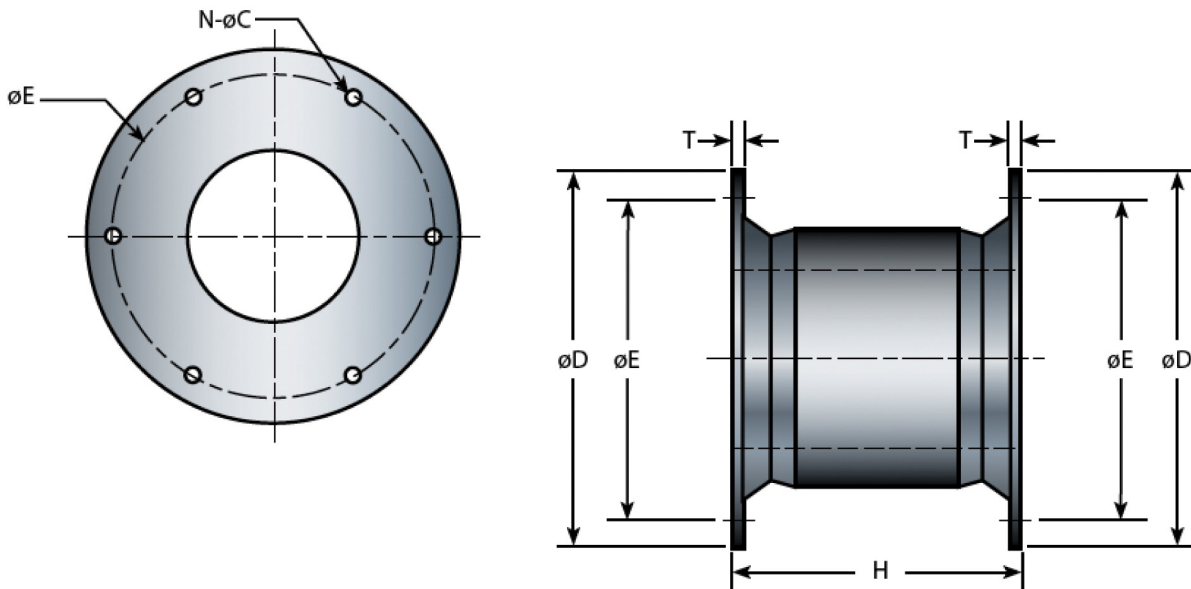


Cell fenders are the most durable rubber fenders available and are currently the largest moulded fenders made. Among all types of fenders, cell fenders offer minimum reaction per ton-meter energy absorbed. The very geometrical shape gives it sturdiness, shear resistance, compact structure and the capacity to absorb energy equally from all directions. Fendguard's cell type fenders are available in the widest range of sizes with characteristics including:

- Good energy absorption to reaction force ratio (E/R)
- Integrated and fully-embedded fender flanges make assembly and installation simple
- Good shear force resistance due to the large diameter of the fender flanges
- Large fender footprint with good force distribution could lead to relative light panel construction



Model	H	ØD	ØE PCD	T	N - ØC	Bolt Size
Metric (mm)	1250	1650	1450	45	6-53	M42
Imperial (in)	49.2	65.0	57.1	1.77	6-2.09	1-3/4

STANDARD RUBBER GRADE PERFORMANCE

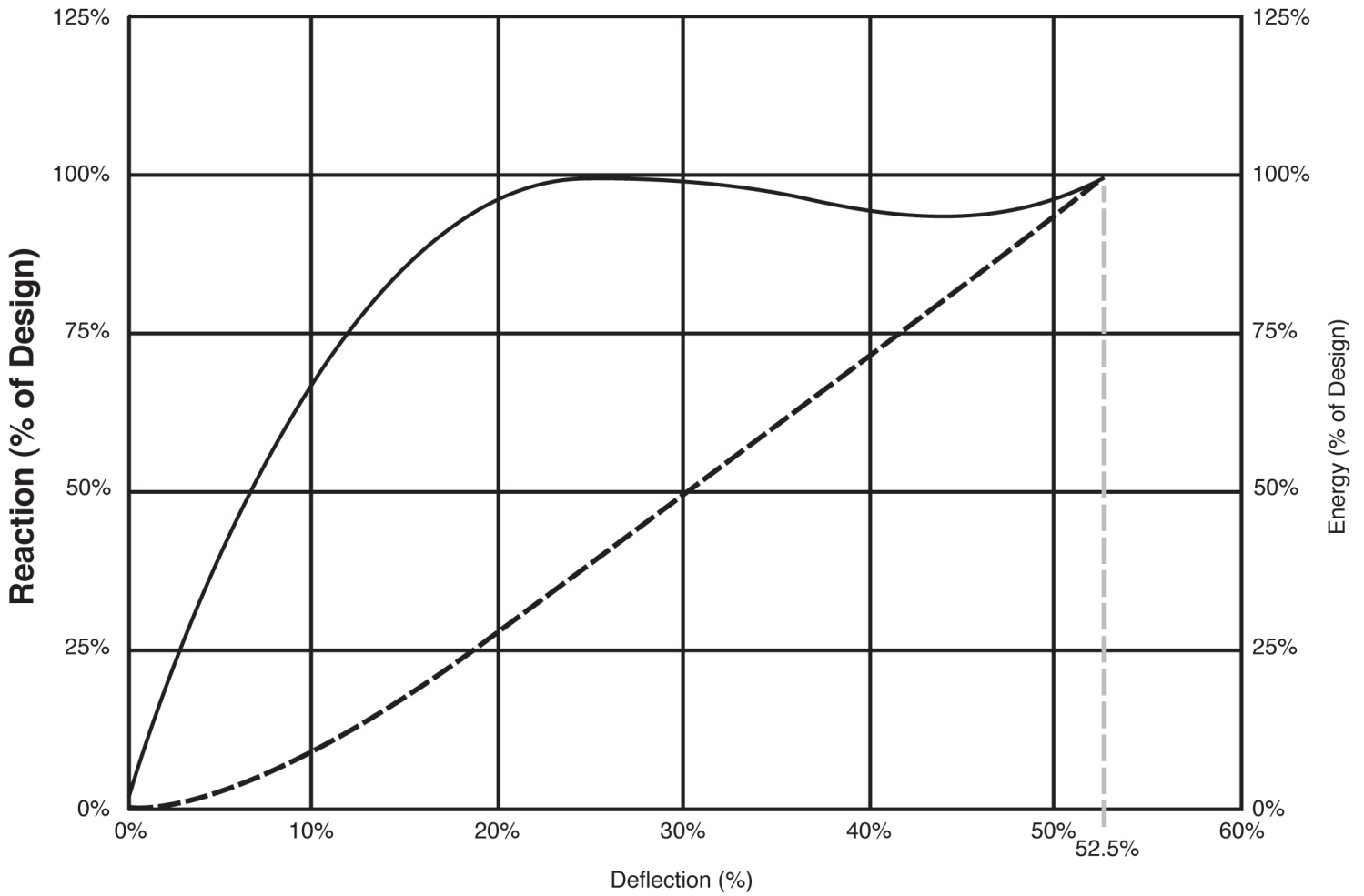
CL-FG-1250	G4		G3		G2		G1		G0	
	R	E	R	E	R	E	R	E	R	E
Metric (kN : kN-m)	1153	632	1022	561	886	486	682	374	546	299
Imperial (k : ft-kips)	259	466	230	413	199	358	153	276	123	220

INTERMEDIATE RUBBER GRADES | Metric Units are in kN and kn-m Imperial units are in kips and ft-kips

Grade	Reaction/Energy	Metric	Imperial	Grade	Reaction/Energy	Metric	Imperial
G0.1	R	560	126	G2.1	R	940	211
	E	307	226		E	516	380
G0.2	R	573	129	G2.2	R	954	214
	E	314	231		E	524	386
G0.3	R	587	132	G2.3	R	218	218
	E	322	237		E	531	391
G0.4	R	600	135	G2.4	R	940	211
	E	329	242		E	516	380
G0.5	R	614	138	G2.5	R	954	214
	E	337	248		E	524	386
G0.6	R	628	141	G2.6	R	218	218
	E	344	254		E	531	391
G0.7	R	641	144	G2.7	R	981	221
	E	352	259		E	539	397
G0.8	R	655	147	G2.8	R	995	224
	E	359	265		E	546	402
G0.9	R	668	150	G2.9	R	1008	227
	E	367	270		E	554	408
G1.0	R	682	153	G3	R	1022	230
	E	374	276		E	561	413
G1.1	R	702	158	G3.1	R	1035	233
	E	385	284		E	568	419
G1.2	R	723	163	G3.2	R	1048	236
	E	396	292		E	575	424
G1.3	R	743	167	G3.3	R	1061	239
	E	408	300		E	582	429
G1.4	R	764	172	G3.4	R	1074	242
	E	419	309		E	589	434
G1.5	R	784	176	G3.5	R	1088	244
	E	430	317		E	597	440
G1.6	R	804	181	G3.6	R	1101	247
	E	441	325		E	604	445
G1.7	R	825	185	G3.7	R	1114	250
	E	452	333		E	611	450
G1.8	R	845	190	G3.8	R	1127	253
	E	464	342		E	618	455
G1.9	R	866	195	G3.9	R	1140	256
	E	475	350		E	625	461
G2	R	886	199	G4	R	1153	259
	E	486	358		E	632	466

GENERALIZED PERFORMANCE CURVE-CELL FENDER

— Reaction - - - Energy



www.fendguard.com

Toll Free: 1-888-219-0418
Tel: (604) 273-4557

Fax: 1-888-845-9522 / (604) 273-1006
E-mail: sales@fendguard.com