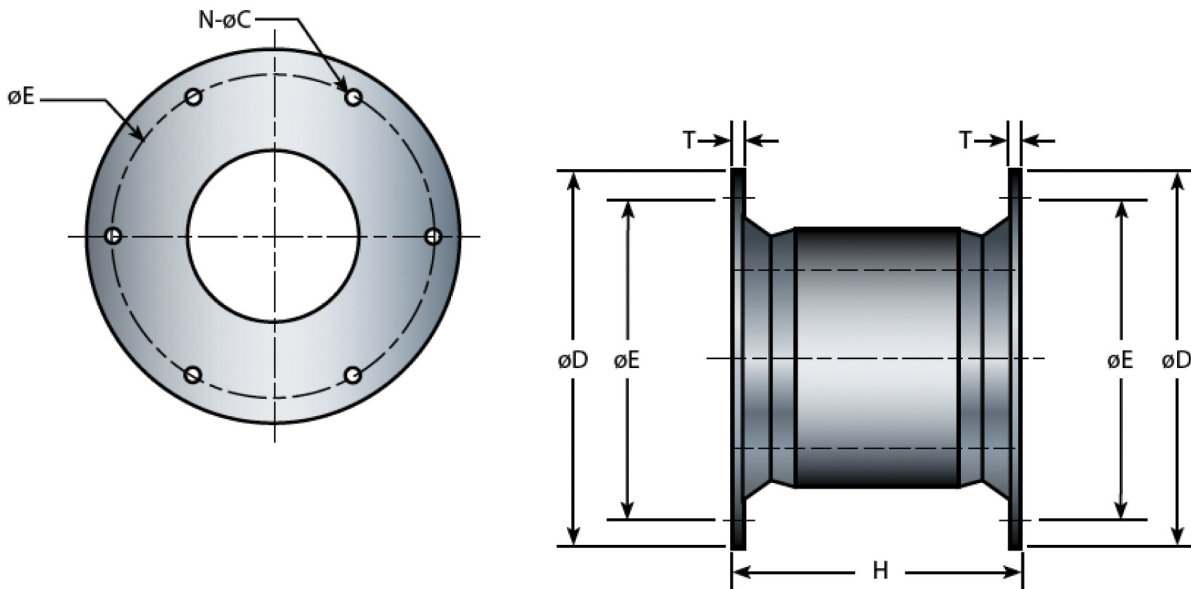


Cell fenders are the most durable rubber fenders available and are currently the largest moulded fenders made. Among all types of fenders, cell fenders offer minimum reaction per ton-meter energy absorbed. The very geometrical shape gives it sturdiness, shear resistance, compact structure and the capacity to absorb energy equally from all directions. Fendguard's cell type fenders are available in the widest range of sizes with characteristics including:

- Good energy absorption to reaction force ratio (E/R)
- Integrated and fully-embedded fender flanges make assembly and installation simple
- Good shear force resistance due to the large diameter of the fender flanges
- Large fender footprint with good force distribution could lead to relative light panel construction



Model	H	ØD	ØE PCD	T	N - ØC	Bolt Size
Metric (mm)	1600	2000	1800	52	8-61	M52
Imperial (in)	63.0	78.7	70.9	2.05	8-2.40	2

STANDARD RUBBER GRADE PERFORMANCE

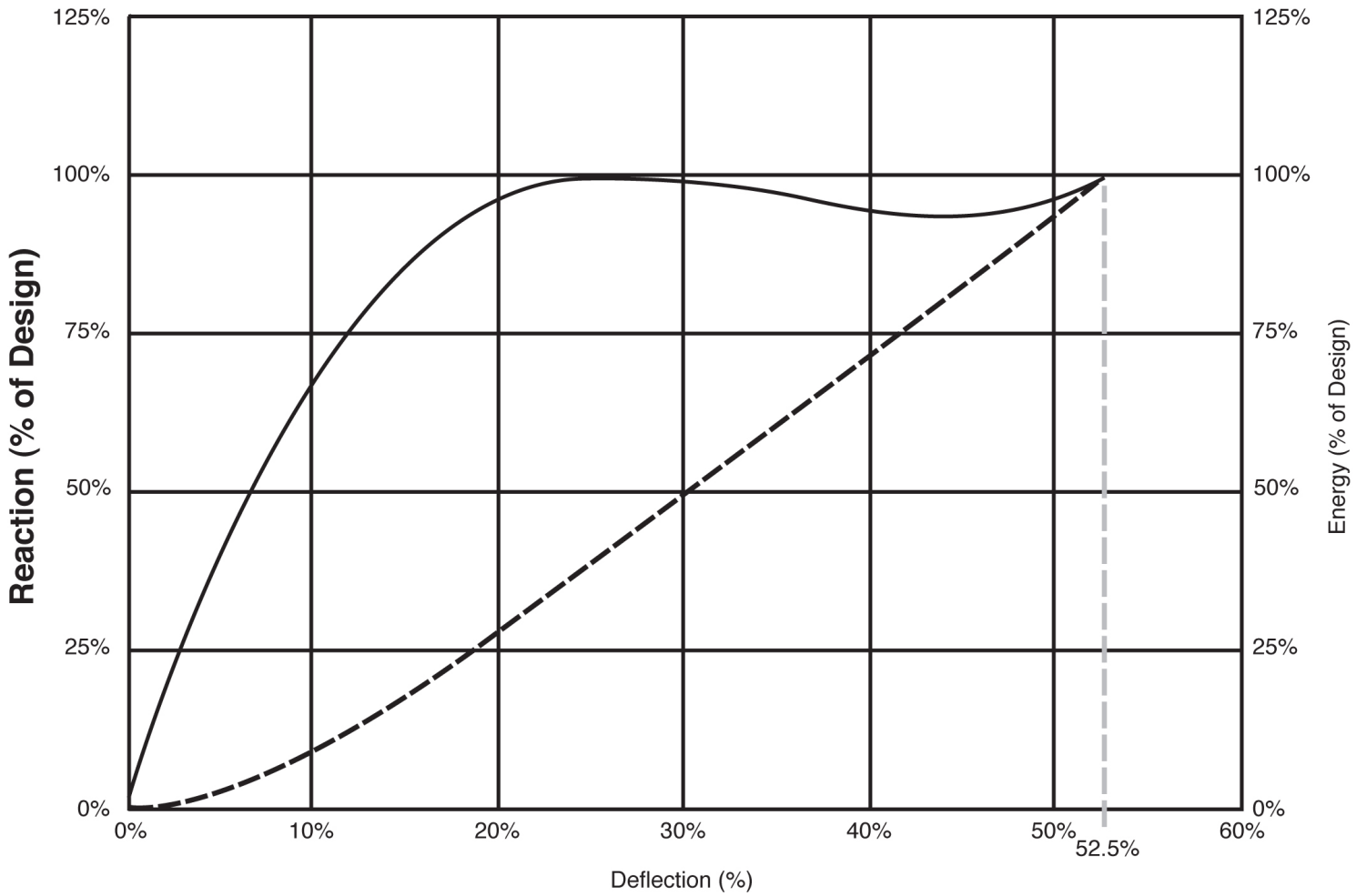
CL-FG-1600	G4		G3		G2		G1		G0	
	R	E	R	E	R	E	R	E	R	E
Metric (kN : kN-m)	1888	1326	1676	1177	1453	1020	1117	786	894	628
Imperial (k : ft-kips)	424	977	377	867	327	752	251	579	201	463

INTERMEDIATE RUBBER GRADES | Metric Units are in kN and kn-m Imperial units are in kips and ft-kips

Grade	Reaction/Energy	Metric	Imperial	Grade	Reaction/Energy	Metric	Imperial
G0.1	R	916	206	G2.1	R	1542	347
	E	644	474		E	1083	798
G0.2	R	939	211	G2.2	R	1565	352
	E	660	486		E	1099	810
G0.3	R	961	216	G2.3	R	357	357
	E	675	498		E	1114	821
G0.4	R	983	221	G2.4	R	1542	347
	E	691	509		E	1083	798
G0.5	R	1006	226	G2.5	R	1565	352
	E	707	521		E	1099	810
G0.6	R	1028	231	G2.6	R	357	357
	E	723	533		E	1114	821
G0.7	R	1050	236	G2.7	R	1609	362
	E	739	544		E	1130	833
G0.8	R	1072	241	G2.8	R	1631	367
	E	754	556		E	1146	844
G0.9	R	1095	246	G2.9	R	1654	372
	E	770	568		E	1161	856
G1.0	R	1117	251	G3	R	1676	377
	E	786	579		E	1177	867
G1.1	R	1151	259	G3.1	R	1697	382
	E	809	597		E	1192	878
G1.2	R	1184	266	G3.2	R	1718	386
	E	833	614		E	1207	889
G1.3	R	1218	274	G3.3	R	1740	391
	E	856	631		E	1222	900
G1.4	R	1251	281	G3.4	R	1761	396
	E	880	648		E	1237	911
G1.5	R	1285	289	G3.5	R	1782	401
	E	903	666		E	1252	922
G1.6	R	1319	296	G3.6	R	1803	405
	E	926	683		E	1266	933
G1.7	R	1352	304	G3.7	R	1824	410
	E	950	700		E	1281	944
G1.8	R	1386	312	G3.8	R	1846	415
	E	717	973		E	1296	955
G1.9	R	1419	319	G3.9	R	1867	420
	E	997	734		E	1311	966
G2	R	1453	327	G4	R	1888	424
	E	1020	752		E	1326	977

GENERALIZED PERFORMANCE CURVE-CELL FENDER

— Reaction - - - Energy



www.fendguard.com

Toll Free: 1-888-219-0418
Tel: (604) 273-4557

Fax: 1-888-845-9522 / (604) 273-1006
E-mail: sales@fendguard.com