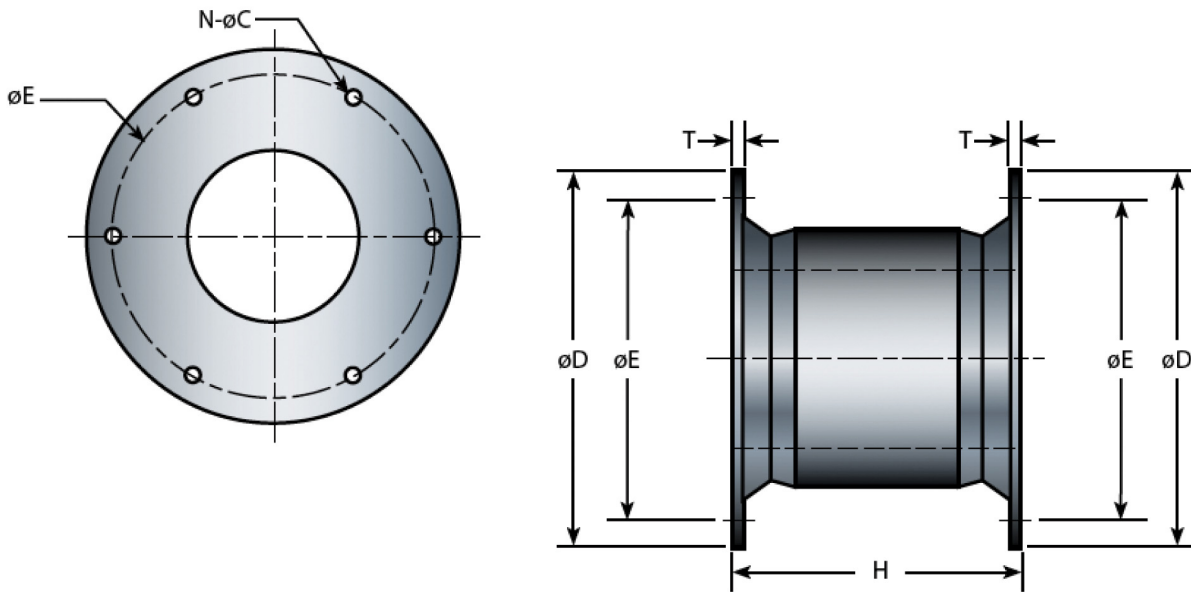


Cell fenders are the most durable rubber fenders available and are currently the largest moulded fenders made. Among all types of fenders, cell fenders offer minimum reaction per ton-meter energy absorbed. The very geometrical shape gives it sturdiness, shear resistance, compact structure and the capacity to absorb energy equally from all directions. Fendguard's cell type fenders are available in the widest range of sizes with characteristics including:

- Good energy absorption to reaction force ratio (E/R)
- Integrated and fully-embedded fender flanges make assembly and installation simple
- Good shear force resistance due to the large diameter of the fender flanges
- Large fender footprint with good force distribution could lead to relative light panel construction



Model	H	ØD	ØE PCD	T	N - ØC	Bolt Size
Metric (mm)	1700	2100	1900	55	8-66	M56
Imperial (in)	66.9	82.7	74.8	2.17	8-2.60	2-1/4

STANDARD RUBBER GRADE PERFORMANCE

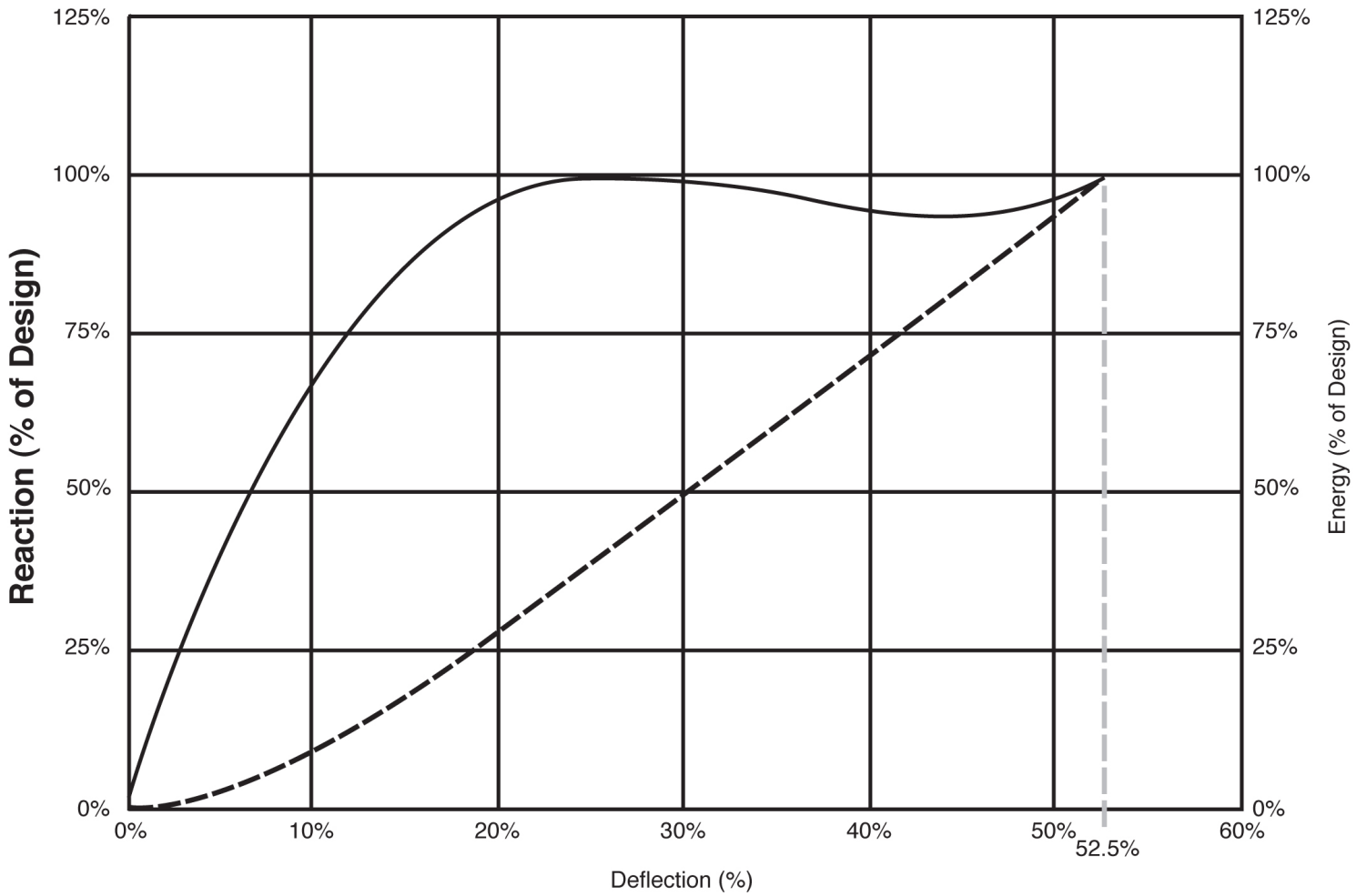
CL-FG-1700	G4		G3		G2		G1		G0	
	R	E	R	E	R	E	R	E	R	E
Metric (kN : kN-m)	2131	1591	1892	1413	1640	1224	1262	941	1009	753
Imperial (k : ft-kips)	479	1173	425	1041	369	902	284	694	227	555

INTERMEDIATE RUBBER GRADES | Metric Units are in kN and kn-m Imperial units are in kips and ft-kips

Grade	Reaction/Energy	Metric	Imperial	Grade	Reaction/Energy	Metric	Imperial
G0.1	R	1034	233	G2.1	R	1741	391
	E	772	569		E	1300	958
G0.2	R	1060	238	G2.2	R	1766	397
	E	791	583		E	1319	972
G0.3	R	1085	244	G2.3	R	403	403
	E	809	597		E	1337	986
G0.4	R	1110	250	G2.4	R	1741	391
	E	828	610		E	1300	958
G0.5	R	1136	255	G2.5	R	1766	397
	E	847	624		E	1319	972
G0.6	R	1161	261	G2.6	R	403	403
	E	866	638		E	1337	986
G0.7	R	1186	267	G2.7	R	1816	408
	E	885	652		E	1356	1000
G0.8	R	1211	272	G2.8	R	1842	414
	E	903	666		E	1375	1014
G0.9	R	1237	278	G2.9	R	1867	420
	E	922	680		E	1394	1027
G1.0	R	1262	284	G3	R	1892	425
	E	941	694		E	1413	1041
G1.1	R	1300	292	G3.1	R	1916	431
	E	969	714		E	1432	1054
G1.2	R	1338	301	G3.2	R	1940	436
	E	998	735		E	1449	1068
G1.3	R	1375	309	G3.3	R	1964	441
	E	1026	756		E	1466	1081
G1.4	R	1413	318	G3.4	R	1988	447
	E	1054	777		E	1484	1094
G1.5	R	1451	326	G3.5	R	2012	452
	E	1083	798		E	1502	1107
G1.6	R	1489	335	G3.6	R	2035	458
	E	1111	819		E	1520	1120
G1.7	R	1527	343	G3.7	R	2059	463
	E	1139	840		E	1538	1133
G1.8	R	1564	352	G3.8	R	2083	468
	E	860	1167		E	1555	1146
G1.9	R	1602	360	G3.9	R	2107	474
	E	1196	881		E	1573	1159
G2	R	1640	369	G4	R	2131	479
	E	1224	902		E	1591	1173

GENERALIZED PERFORMANCE CURVE-CELL FENDER

— Reaction - - - Energy



www.fendguard.com

Toll Free: 1-888-219-0418
Tel: (604) 273-4557

Fax: 1-888-845-9522 / (604) 273-1006
E-mail: sales@fendguard.com