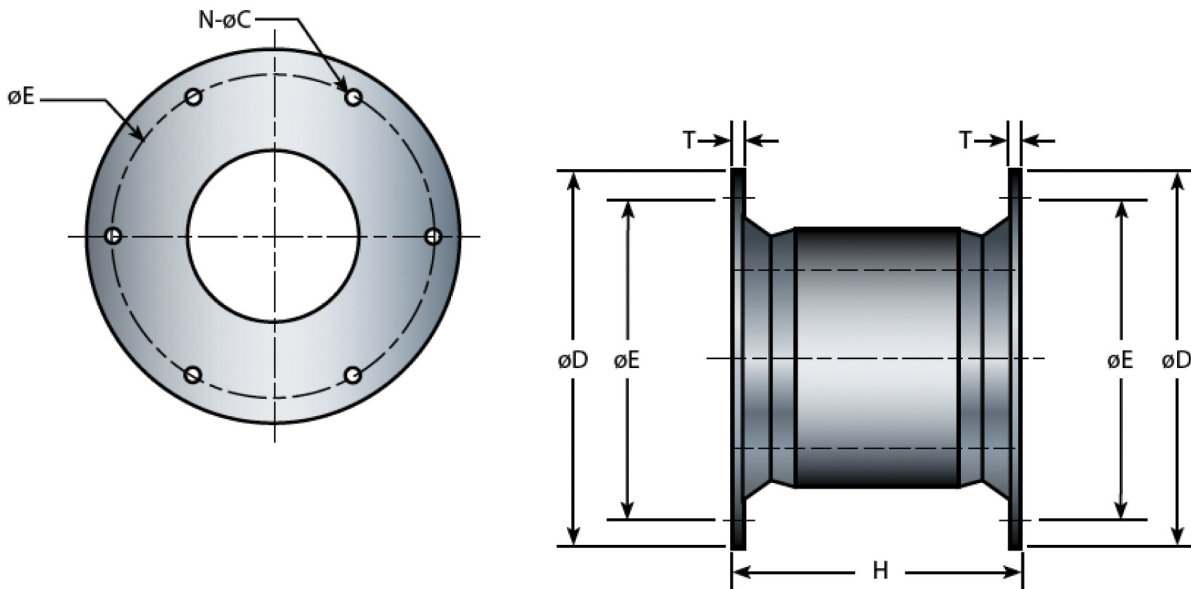


Cell fenders are the most durable rubber fenders available and are currently the largest moulded fenders made. Among all types of fenders, cell fenders offer minimum reaction per ton-meter energy absorbed. The very geometrical shape gives it sturdiness, shear resistance, compact structure and the capacity to absorb energy equally from all directions. Fendguard's cell type fenders are available in the widest range of sizes with characteristics including:

- Good energy absorption to reaction force ratio (E/R)
- Integrated and fully-embedded fender flanges make assembly and installation simple
- Good shear force resistance due to the large diameter of the fender flanges
- Large fender footprint with good force distribution could lead to relative light panel construction



Model	H	ØD	ØE PCD	T	N - ØC	Bolt Size
Metric (mm)	2000	2200	2000	55	8-74	M64
Imperial (in)	78.7	86.6	78.7	2.17	8-2.91	2-1/2

STANDARD RUBBER GRADE PERFORMANCE

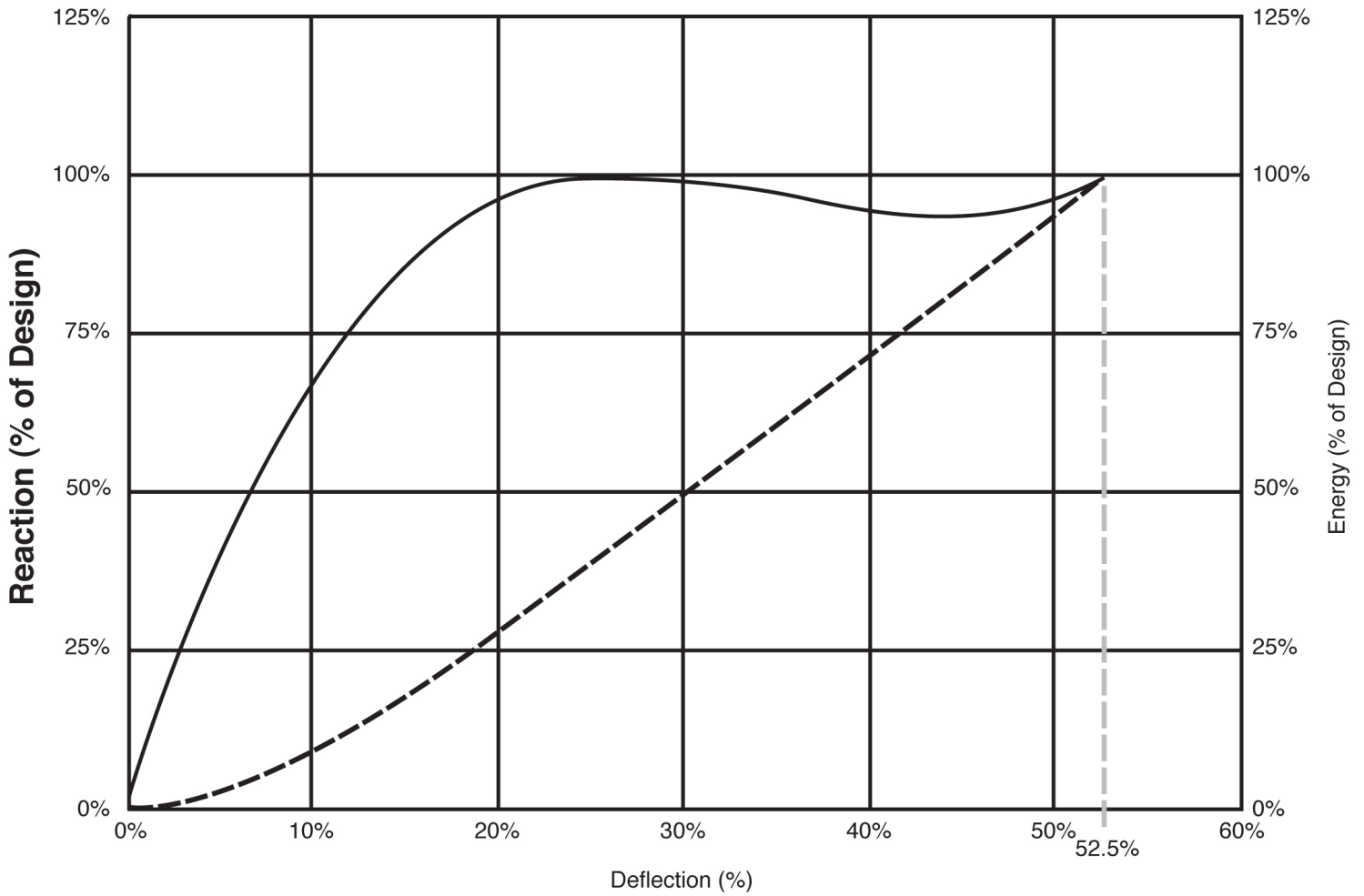
CL-FG-2000	G4		G3		G2		G1		G0	
	R	E	R	E	R	E	R	E	R	E
Metric (kN : kN-m)	2941	2591	2619	2300	2270	1994	1746	1534	1398	1227
Imperial (k : ft-kips)	661	1910	589	1695	510	1470	393	1131	314	904

INTERMEDIATE RUBBER GRADES | Metric Units are in kN and kn-m Imperial units are in kips and ft-kips

Grade	Reaction/Energy	Metric	Imperial	Grade	Reaction/Energy	Metric	Imperial
G0.1	R	1433	322	G2.1	R	2410	542
	E	1258	927		E	2116	1560
G0.2	R	1468	330	G2.2	R	2445	550
	E	1288	950		E	2147	1582
G0.3	R	1502	338	G2.3	R	557	557
	E	1319	972		E	2178	1605
G0.4	R	1537	346	G2.4	R	2410	542
	E	1395	995		E	2116	1560
G0.5	R	1572	353	G2.5	R	2445	550
	E	1381	1017		E	2147	1582
G0.6	R	1607	361	G2.6	R	557	557
	E	1411	1040		E	2178	1605
G0.7	R	1642	369	G2.7	R	2514	565
	E	1442	1063		E	2208	1637
G0.8	R	1676	377	G2.8	R	2549	573
	E	1473	1085		E	2239	1650
G0.9	R	1711	385	G2.9	R	2584	581
	E	1503	1108		E	2269	1673
G1.0	R	1746	393	G3	R	2619	589
	E	1534	1131		E	2300	1695
G1.1	R	1798	404	G3.1	R	2651	596
	E	1580	1164		E	2329	1717
G1.2	R	1851	416	G3.2	R	2683	603
	E	1626	1198		E	2358	1738
G1.3	R	1903	428	G3.3	R	2716	611
	E	1672	1232		E	2387	1759
G1.4	R	1956	440	G3.4	R	2748	618
	E	1718	1266		E	2416	1781
G1.5	R	2008	451	G3.5	R	2780	625
	E	1764	1300		E	2446	1802
G1.6	R	2060	463	G3.6	R	2812	632
	E	1810	1334		E	2475	1824
G1.7	R	2113	475	G3.7	R	2844	639
	E	1856	1368		E	2504	1845
G1.8	R	2165	487	G3.8	R	2877	647
	E	1402	1902		E	2533	1867
G1.9	R	2218	499	G3.9	R	2909	654
	E	1948	1436		E	2562	1888
G2	R	2270	510	G4	R	2941	661
	E	1994	1470		E	2591	1910

GENERALIZED PERFORMANCE CURVE-CELL FENDER

— Reaction - - - Energy



www.fendguard.com

Toll Free: 1-888-219-0418
Tel: (604) 273-4557

Fax: 1-888-845-9522 / (604) 273-1006
E-mail: sales@fendguard.com