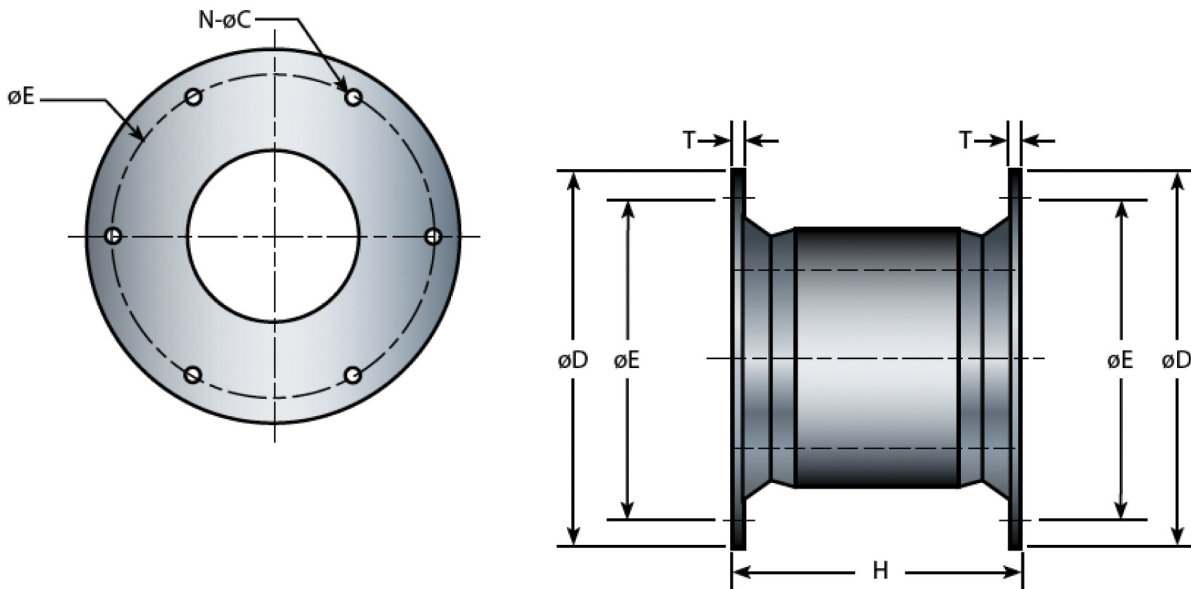


Cell fenders are the most durable rubber fenders available and are currently the largest moulded fenders made. Among all types of fenders, cell fenders offer minimum reaction per ton-meter energy absorbed. The very geometrical shape gives it sturdiness, shear resistance, compact structure and the capacity to absorb energy equally from all directions. Fendguard's cell type fenders are available in the widest range of sizes with characteristics including:

- Good energy absorption to reaction force ratio (E/R)
- Integrated and fully-embedded fender flanges make assembly and installation simple
- Good shear force resistance due to the large diameter of the fender flanges
- Large fender footprint with good force distribution could lead to relative light panel construction



Model	H	ØD	ØE PCD	T	N - ØC	Bolt Size
Metric (mm)	2250	2550	2300	60	10-74	M64
Imperial (in)	88.6	100	90.6	2.36	10-2.91	2-1/2

## STANDARD RUBBER GRADE PERFORMANCE

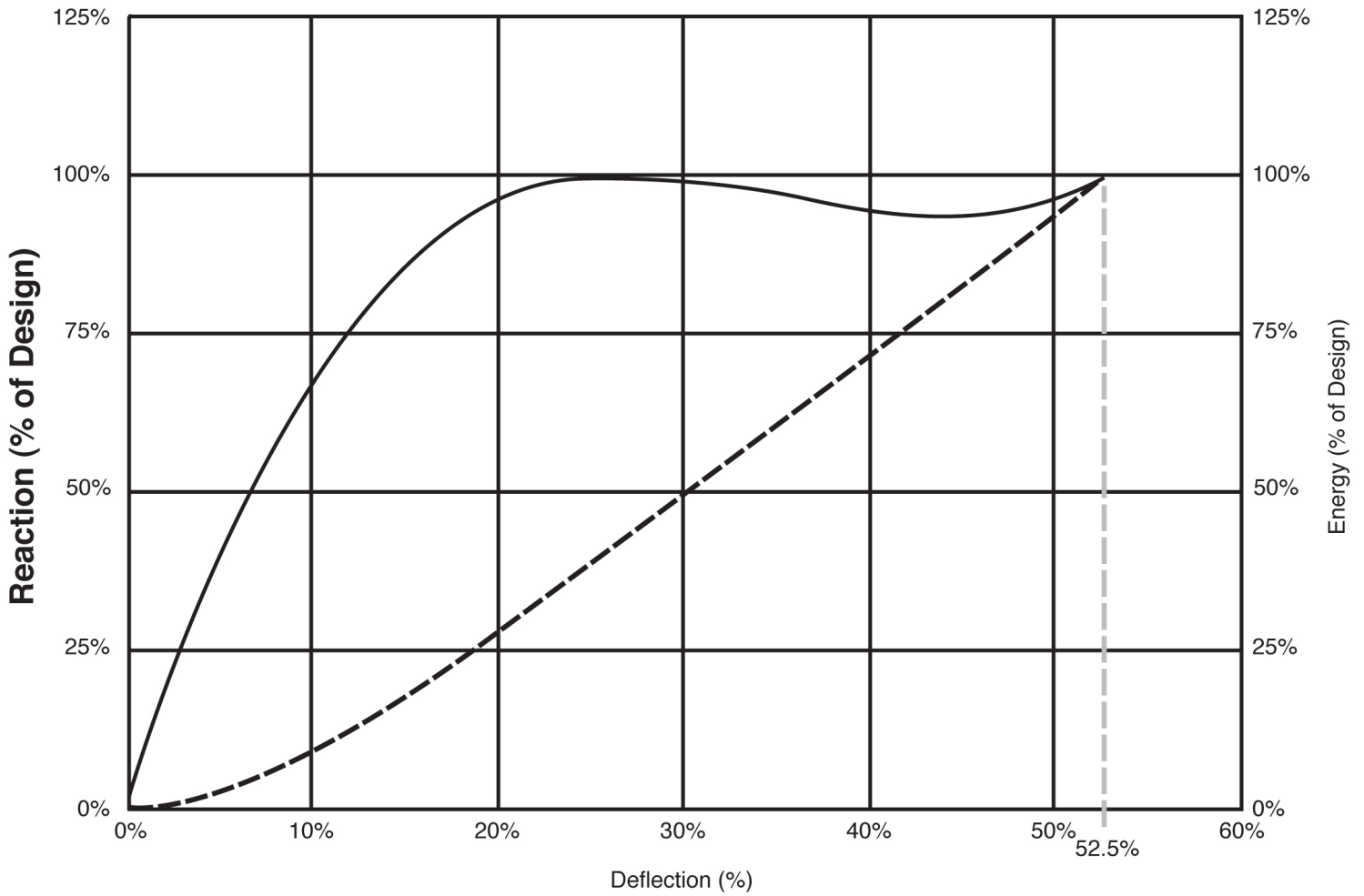
CL-FG-2250	G4		G3		G2		G1		G0	
	R	E	R	E	R	E	R	E	R	E
Metric (kN : kN-m)	4145	4095	3679	3628	3188	3150	2454	2424	2085	2060
Imperial (k : ft-kips)	932	3018	827	2674	717	2322	552	1786	469	1518

## INTERMEDIATE RUBBER GRADES | Metric Units are in kN and kn-m Imperial units are in kips and ft-kips

Grade	Reaction/Energy	Metric	Imperial	Grade	Reaction/Energy	Metric	Imperial
G0.1	R	2122	477	G2.1	R	3384	761
	E	2096	1545		E	3341	2462
G0.2	R	2159	485	G2.2	R	3434	772
	E	2133	1572		E	3389	2498
G0.3	R	2196	494	G2.3	R	783	783
	E	2169	1599		E	3437	2533
G0.4	R	2233	502	G2.4	R	3384	761
	E	2206	1626		E	3341	2462
G0.5	R	2270	510	G2.5	R	3434	772
	E	2242	1652		E	3389	2498
G0.6	R	2306	519	G2.6	R	783	783
	E	2278	1679		E	3437	2533
G0.7	R	2343	527	G2.7	R	3532	794
	E	2315	1706		E	3485	2568
G0.8	R	2380	535	G2.8	R	3581	805
	E	2351	1733		E	3532	2603
G0.9	R	2417	543	G2.9	R	3630	816
	E	2388	1760		E	3580	2639
G1.0	R	2454	552	G3	R	3679	827
	E	2424	1786		E	3628	2674
G1.1	R	2527	568	G3.1	R	3726	838
	E	2497	1840		E	3675	2708
G1.2	R	2601	585	G3.2	R	3772	848
	E	2569	1894		E	3721	2743
G1.3	R	2674	601	G3.3	R	3819	859
	E	2642	1947		E	3768	2777
G1.4	R	2748	618	G3.4	R	3865	869
	E	2714	2001		E	3815	2812
G1.5	R	2821	634	G3.5	R	3912	879
	E	2787	2054		E	3862	2846
G1.6	R	2894	651	G3.6	R	3959	890
	E	2860	2108		E	3908	2880
G1.7	R	2968	667	G3.7	R	4005	900
	E	2932	2161		E	3955	2915
G1.8	R	3041	684	G3.8	R	4052	911
	E	2215	3005		E	4002	2949
G1.9	R	3115	700	G3.9	R	4098	921
	E	3077	2268		E	4048	2984
G2	R	3188	717	G4	R	4145	932
	E	3150	2322		E	4095	3018

### GENERALIZED PERFORMANCE CURVE-CELL FENDER

— Reaction - - - Energy



[www.fendguard.com](http://www.fendguard.com)

Toll Free: 1-888-219-0418  
Tel: (604) 273-4557

Fax: 1-888-845-9522 / (604) 273-1006  
E-mail: [sales@fendguard.com](mailto:sales@fendguard.com)