



# FENDGUARD

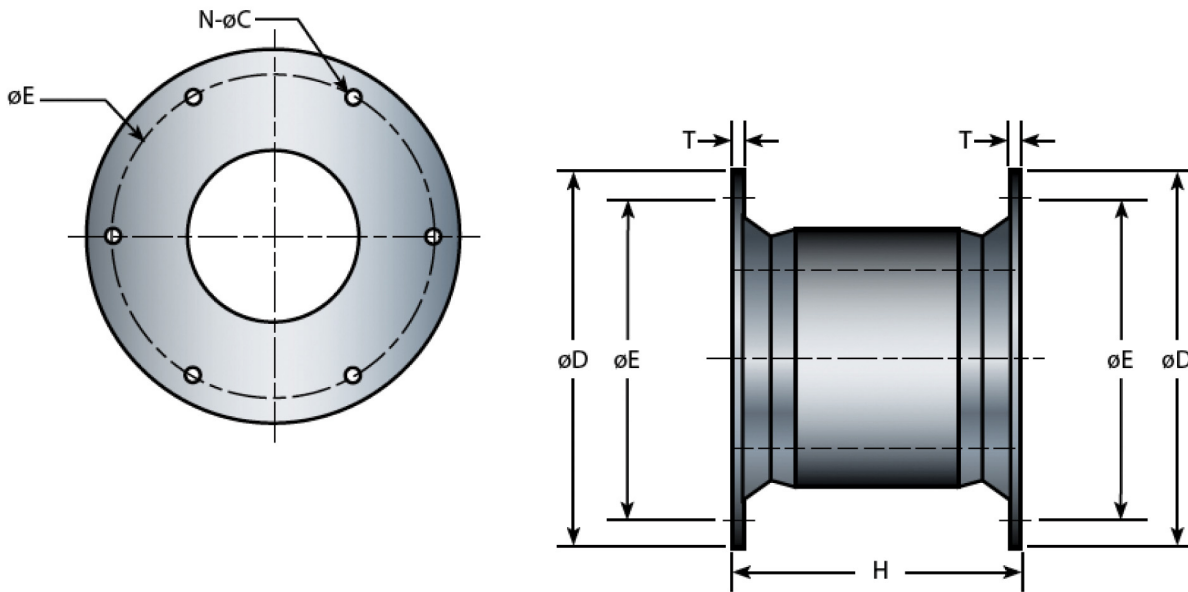
[www.fendguard.com](http://www.fendguard.com)

## Cell Fenders

# CL-FG-2500

Cell fenders are the most durable rubber fenders available and are currently the largest moulded fenders made. Among all types of fenders, cell fenders offer minimum reaction per ton-meter energy absorbed. The very geometrical shape gives it sturdiness, shear resistance, compact structure and the capacity to absorb energy equally from all directions. Fendguard's cell type fenders are available in the widest range of sizes with characteristics including:

- Good energy absorption to reaction force ratio (E/R)
- Integrated and fully-embedded fender flanges make assembly and installation simple
- Good shear force resistance due to the large diameter of the fender flanges
- Large fender footprint with good force distribution could lead to relative light panel construction



Model	H	$\varnothing D$	$\varnothing E$ PCD	T	N - $\varnothing C$	Bolt Size
Metric (mm)	2500	2950	2700	70	10-74	M64
Imperial (in)	98.4	116	106	2.76	10-2.91	2-1/2

## STANDARD RUBBER GRADE PERFORMANCE

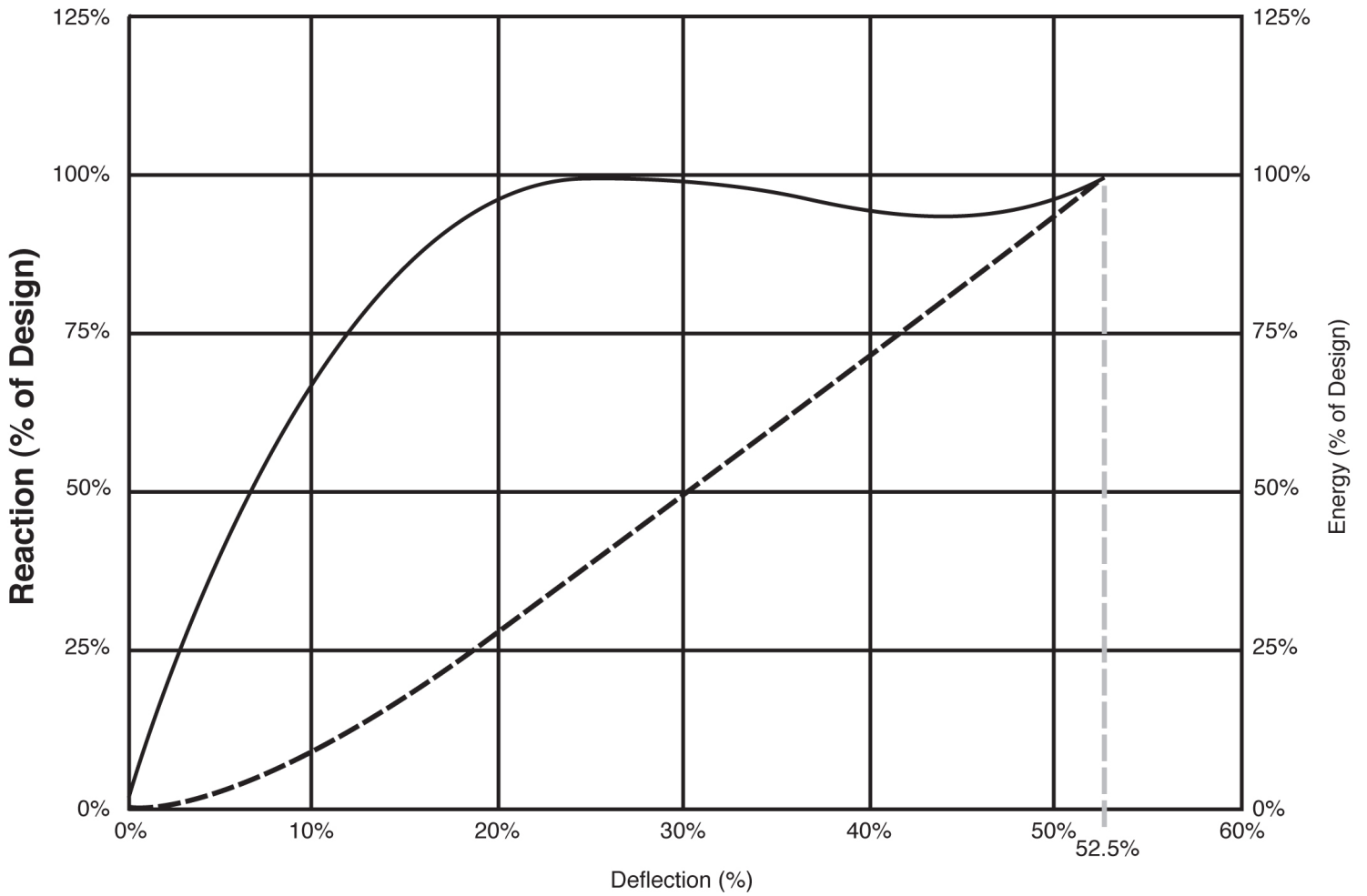
CL-FG-2500	G4		G3		G2		G1		G0	
	R	E	R	E	R	E	R	E	R	E
Metric (kN : kN-m)	5118	5618	4543	4987	3937	4322	3028	3325	2574	2826
Imperial (k : ft-kips)	1151	4140	1021	3675	885	3185	681	2451	579	2083

## INTERMEDIATE RUBBER GRADES | Metric Units are in kN and kn-m Imperial units are in kips and ft-kips

Grade	Reaction/Energy	Metric	Imperial	Grade	Reaction/Energy	Metric	Imperial
G0.1	R	2619	589	G2.1	R	4179	940
	E	2876	2120		E	4588	3381
G0.2	R	2665	599	G2.2	R	4240	953
	E	2926	2156		E	4655	3430
G0.3	R	2710	609	G2.3	R	967	967
	E	2976	2193		E	4721	3479
G0.4	R	2756	620	G2.4	R	4179	940
	E	3026	2230		E	4588	3381
G0.5	R	2801	630	G2.5	R	4240	953
	E	3076	2267		E	4655	3430
G0.6	R	2846	640	G2.6	R	967	967
	E	3125	2303		E	4721	3479
G0.7	R	2892	650	G2.7	R	4361	980
	E	3175	2340		E	4788	3528
G0.8	R	2937	660	G2.8	R	4422	994
	E	3225	2377		E	4854	3577
G0.9	R	2983	671	G2.9	R	4482	1008
	E	3275	2414		E	4921	3626
G1.0	R	3028	681	G3	R	4543	1021
	E	3325	2451		E	4987	3675
G1.1	R	3119	701	G3.1	R	4601	1034
	E	3425	2524		E	5050	3722
G1.2	R	3210	722	G3.2	R	4658	1047
	E	3524	2597		E	5113	3768
G1.3	R	3301	742	G3.3	R	4716	1060
	E	3624	2671		E	5176	3815
G1.4	R	3392	763	G3.4	R	4773	1073
	E	3724	2744		E	4773	3861
G1.5	R	3483	783	G3.5	R	4831	1086
	E	3824	2818		E	5303	3908
G1.6	R	3573	803	G3.6	R	4888	1099
	E	3923	2891		E	5366	3954
G1.7	R	3664	824	G3.7	R	4946	1112
	E	4023	2965		E	5429	4001
G1.8	R	3755	844	G3.8	R	5003	1125
	E	3038	4123		E	5492	4047
G1.9	R	3846	865	G3.9	R	5061	1138
	E	4222	3112		E	5555	4094
G2	R	3937	885	G4	R	5118	1151
	E	4322	3185		E	5618	4140

### GENERALIZED PERFORMANCE CURVE-CELL FENDER

— Reaction - - - Energy



[www.fendguard.com](http://www.fendguard.com)

Toll Free: 1-888-219-0418  
Tel: (604) 273-4557

Fax: 1-888-845-9522 / (604) 273-1006  
E-mail: [sales@fendguard.com](mailto:sales@fendguard.com)