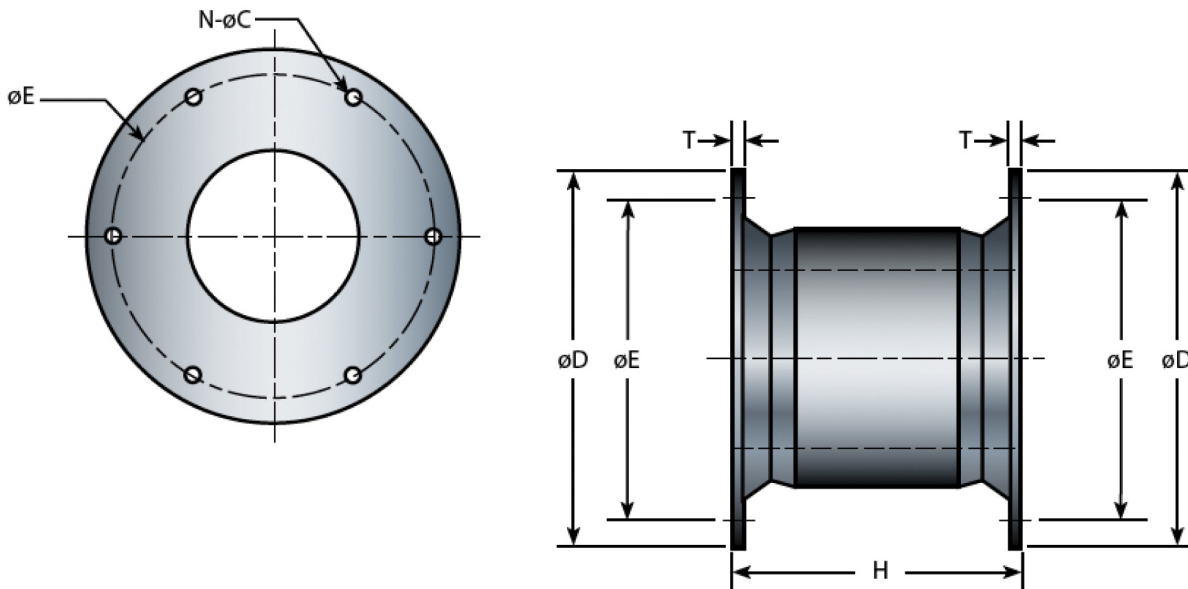


Cell fenders are the most durable rubber fenders available and are currently the largest moulded fenders made. Among all types of fenders, cell fenders offer minimum reaction per ton-meter energy absorbed. The very geometrical shape gives it sturdiness, shear resistance, compact structure and the capacity to absorb energy equally from all directions. Fendguard's cell type fenders are available in the widest range of sizes with characteristics including:

- Good energy absorption to reaction force ratio (E/R)
- Integrated and fully-embedded fender flanges make assembly and installation simple
- Good shear force resistance due to the large diameter of the fender flanges
- Large fender footprint with good force distribution could lead to relative light panel construction



Model	H	$\varnothing D$	$\varnothing E$ PCD	T	N - $\varnothing C$	Bolt Size
Metric (mm)	800	1050	900	30	6-40	M30
Imperial (in)	31.5	41.3	35.4	1.18	6-1.57	1-1/8

STANDARD RUBBER GRADE PERFORMANCE

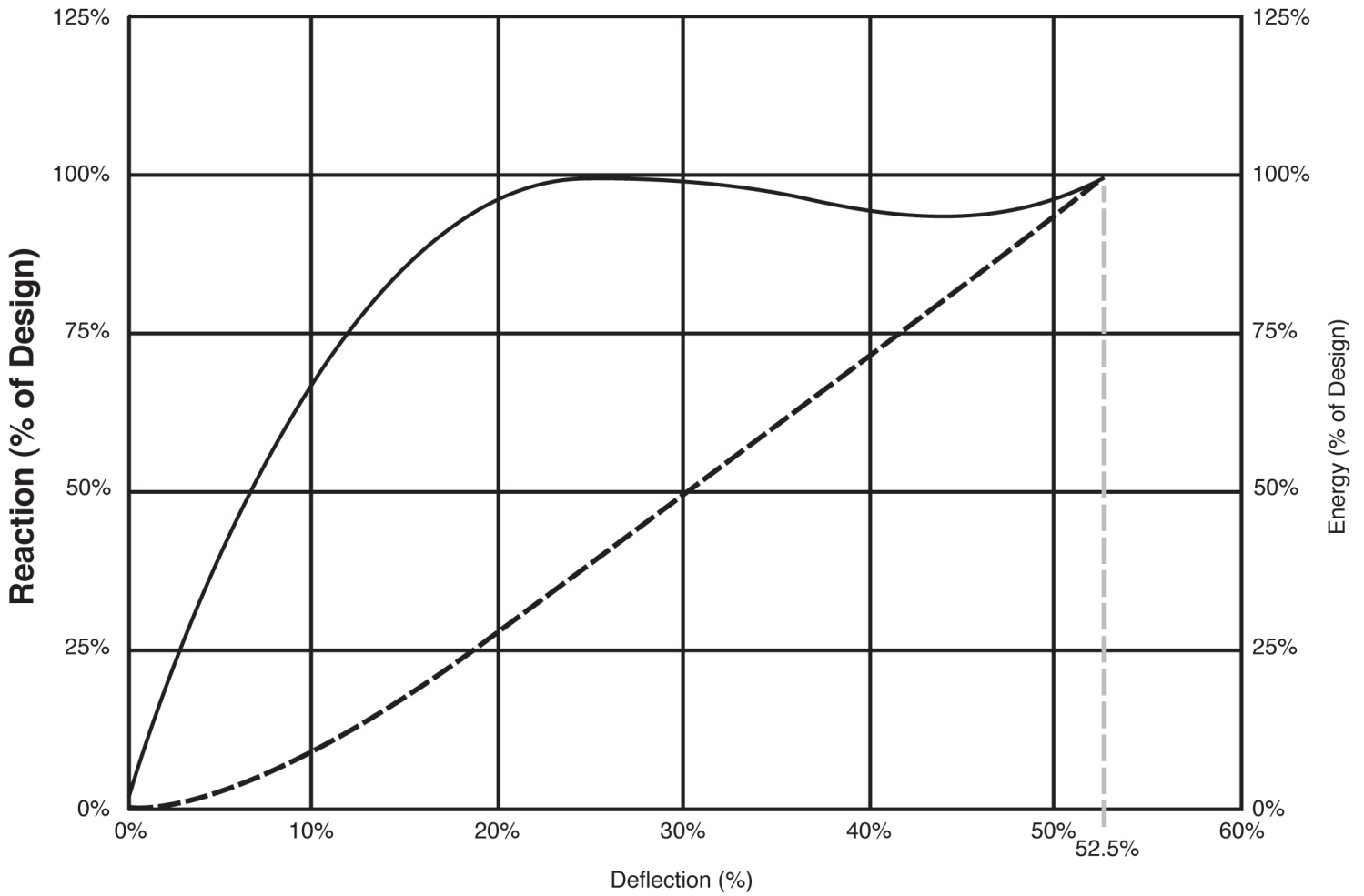
CL-FG-800	G4		G3		G2		G1		G0	
	R	E	R	E	R	E	R	E	R	E
Metric (kN : kN-m)	464	163	412	145	355	125	275	96.1	211	74.5
Imperial (k : ft-kips)	104	120	92.6	107	79.8	92.1	61.8	70.8	47.4	54.9

INTERMEDIATE RUBBER GRADES | Metric Units are in kN and kn-m Imperial units are in kips and ft-kips

Grade	Reaction/Energy	Metric	Imperial	Grade	Reaction/Energy	Metric	Imperial
G0.1	R	217	48.9	G2.1	R	378	84.9
	E	76.7	56.5		E	133	98.0
G0.2	R	224	50.3	G2.2	R	384	86.2
	E	78.8	58.1		E	135	99.5
G0.3	R	230	51.8	G2.3	R	87.5	87.5
	E	81.0	59.7		E	137	101
G0.4	R	237	53.2	G2.4	R	378	84.9
	E	83.1	61.2		E	133	98.0
G0.5	R	243	54.6	G2.5	R	384	86.2
	E	85.3	62.8		E	135	99.5
G0.6	R	249	56.1	G2.6	R	87.5	87.5
	E	87.4	64.4		E	137	101
G0.7	R	256	57.5	G2.7	R	395	88.8
	E	89.6	66.0		E	139	102
G0.8	R	262	58.9	G2.8	R	401	90.1
	E	91.7	67.6		E	141	104
G0.9	R	269	60.4	G2.9	R	406.0	91.3
	E	93.9	69.2		E	143	105
G1.0	R	275	61.8	G3	R	412	92.6
	E	96.0	70.8		E	145	107
G1.1	R	283	63.6	G3.1	R	417	93.8
	E	98.9	72.9		E	147	108
G1.2	R	291	65.4	G3.2	R	422	95.0
	E	102	75.0		E	149	110
G1.3	R	299	67.2	G3.3	R	428	96.1
	E	105	77.2		E	150	111
G1.4	R	307	69.0	G3.4	R	433	97.3
	E	108	79.3		E	152	112
G1.5	R	315	70.8	G3.5	R	438	98.5
	E	111	81.4		E	154	113
G1.6	R	323	72.6	G3.6	R	443	99.6
	E	113	83.6		E	156	115
G1.7	R	331	74.4	G3.7	R	448	101
	E	116	85.7		E	158	116
G1.8	R	339	76.2	G3.8	R	454	102
	E	119	87.9		E	159	117
G1.9	R	347	78.0	G3.9	R	459	103
	E	122	90.0		E	161	119
G2	R	355	79.8	G4	R	464	104
	E	125	92.1		E	163	120

GENERALIZED PERFORMANCE CURVE-CELL FENDER

— Reaction — — Energy



www.fendguard.com

Toll Free: 1-888-219-0418
Tel: (604) 273-4557

Fax: 1-888-845-9522 / (604) 273-1006
E-mail: sales@fendguard.com