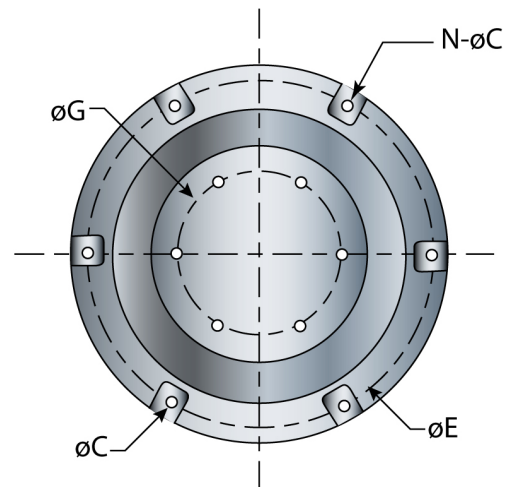
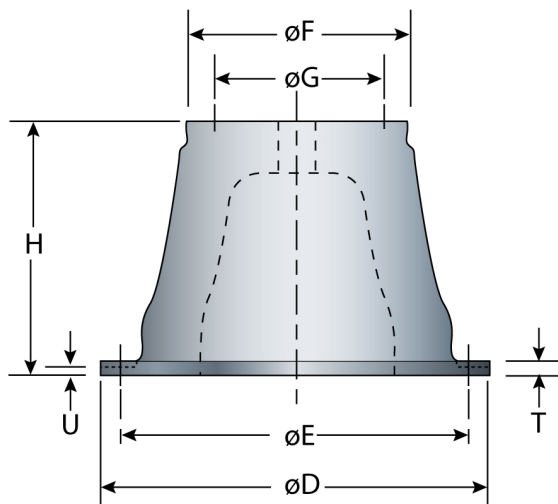


Cone fenders are an improved version of Cell type Fender recently introduced and recommended for all type of applications including high tidal variation sites. Fendguard's cone type fender has the highest energy to reaction ratios of any fender currently in use. Its refined geometry and conical shape result in a number of outstanding performance characteristics which include:

- Exceptionally good energy absorption to reaction force ratio (E/R)
- High efficiency for designs to incorporate smaller, less costly cone fenders instead of larger, less efficient rubber body
- Deflection of 70% of its height and provides great flexibility in its application to operators
- High shear stability which allows the fender to carry even larger panel weights without using chains
- Very good inherent resistance against shear forces due to its geometry and self-centering characteristics
- Typically utilized with a complete fender panel system, but can also be used within a pile support system



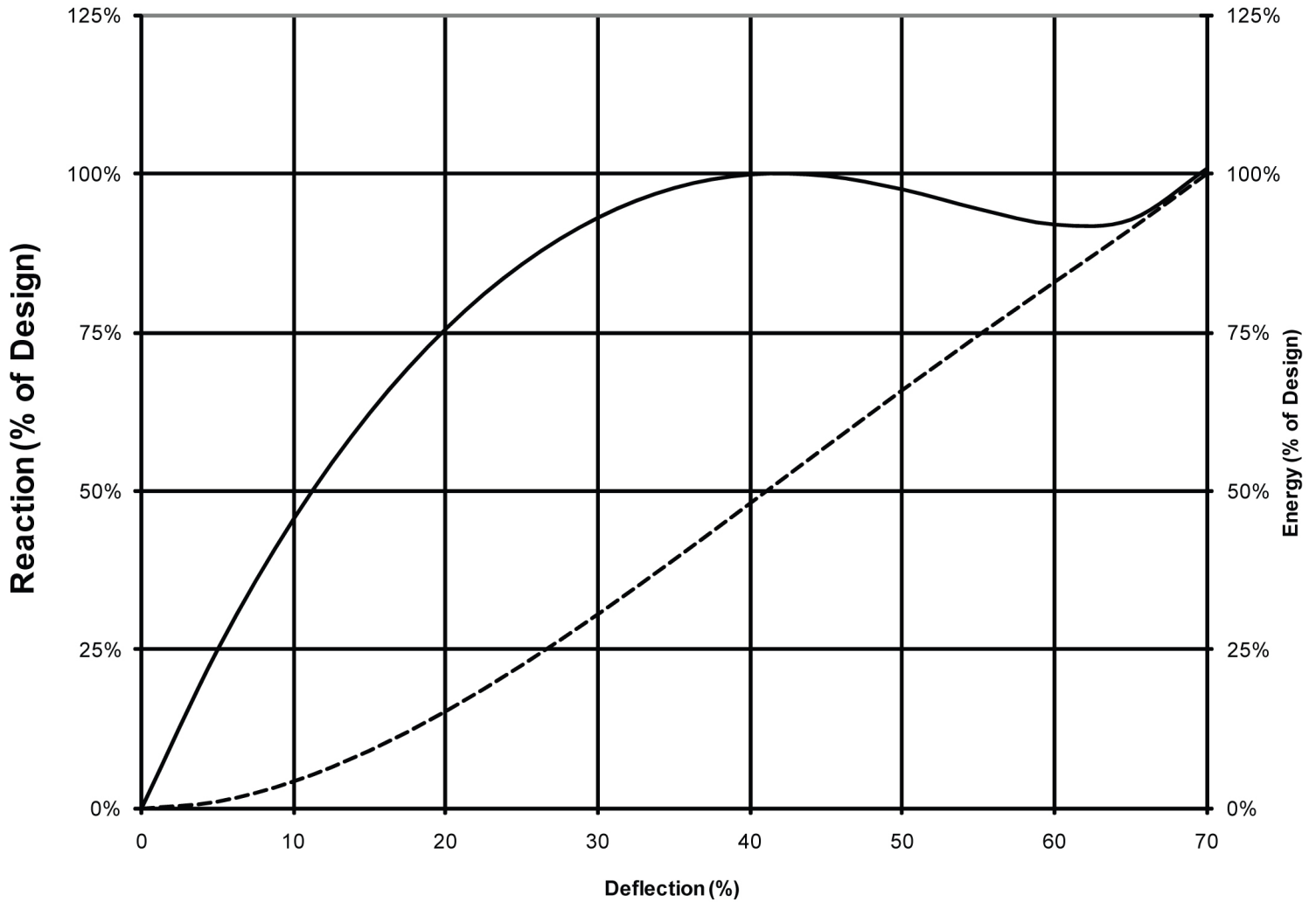
Model	H	ØD	ØE PCD	ØF	uG PCD	T	U	N - ØC	Bolt Size
Metric	500	750	675	425	325	25	21	4-30	M24
Imperial	19.7	29.5	26.6	16.7	12.8	0.98	0.83	4-1.18	M24

STANDARD RUBBER GRADE PERFORMANCE								
CN-FG-500	G4		G3		G2		G1	
	R (kN)	E (kN-m)	R (kN)	E (kN-m)	R (kN)	E (kN-m)	R (kN)	E (kN-m)
Metric	307	81.3	245	65.1	196	54.7	157	43.8
Imperial	68.9	59.9	55.1	48.0	44.1	40.3	35.3	32.3

INTERMEDIATE RUBBER GRADES Metric Units are in kN and kn-m Imperial units are in kips and ft-kips								
Grade	Reaction/Energy	Metric	Imperial		Grade	Reaction/Energy	Metric	Imperial
G0.7	R	145	32.7		G2.4	R	216	48.5
	E	40.7	30.0			E	59	43.5
G0.8	R	149	33.5		G2.5	R	221	49.6
	E	41.8	30.8			E	60	44.3
G0.9	R	153	34.4		G2.6	R	50.7	50.7
	E	42.9	31.6			E	61	45.0
G1	R	157	35.3		G2.7	R	230	51.8
	E	44	32.5			E	62	45.7
G1.1	R	161	36.2		G2.8	R	235	52.9
	E	45.1	33.3			E	63	46.5
G1.2	R	165	37.0		G2.9	R	240	54.0
	E	46.2	34.1			E	64	47.2
G1.3	R	169	37.9		G3	R	245	55.1
	E	47.3	34.9			E	65	47.9
G1.4	R	173	38.8		G3.1	R	251	56.5
	E	48.4	35.7			E	66.6	49.1
G1.5	R	177	39.7		G3.2	R	257	57.9
	E	49.5	36.5			E	68.2	50.3
G1.6	R	180	40.6		G3.3	R	264	59.3
	E	50.6	37.3			E	69.8	51.5
G1.7	R	184	41.4		G3.4	R	270	60.7
	E	51.7	38.1			E	71.4	52.7
G1.8	R	188	42.3		G3.5	R	276	62.0
	E	52.8	38.9			E	73	53.8
G1.9	R	192	43.2		G3.6	R	282	63.4
	E	53.9	39.8			E	74.6	55.0
G2	R	196	44.1		G3.7	R	288	64.8
	E	55	40.6			E	76.2	56.2
G2.1	R	201	45.2		G3.8	R	295	66.2
	E	56	41.3			E	77.8	57.4
G2.2	R	206	46.3		G3.9	R	301	67.6
	E	57	42.0			E	79.4	58.6
G2.3	R	211	47.4		G4	R	307	69.0
	E	58	42.8			E	81	59.7

GENERALIZED PERFORMANCE CURVE-CONE FENDER

— Reaction - - - Energy



www.fendguard.com

Toll Free: 1-888-219-0418
Tel: (604) 273-4557

Fax: 1-888-845-9522 / (604) 273-1006
E-mail: sales@fendguard.com